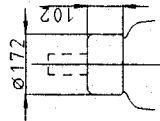
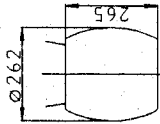
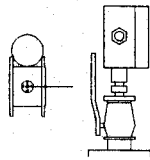


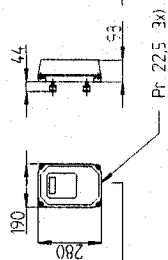
Shield oil-side
(Additional accessories)
LF 170 046-U or
LF 170 046-F



Pressure supervision equipment
LF 410 024-F or LF 410 024-L
(Additional accessories)

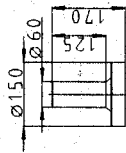


Circuit diagram
5663 176-3



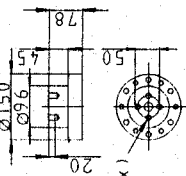
Pr. 225 3x)

Terminal stud SF6-side
(Additional accessories)

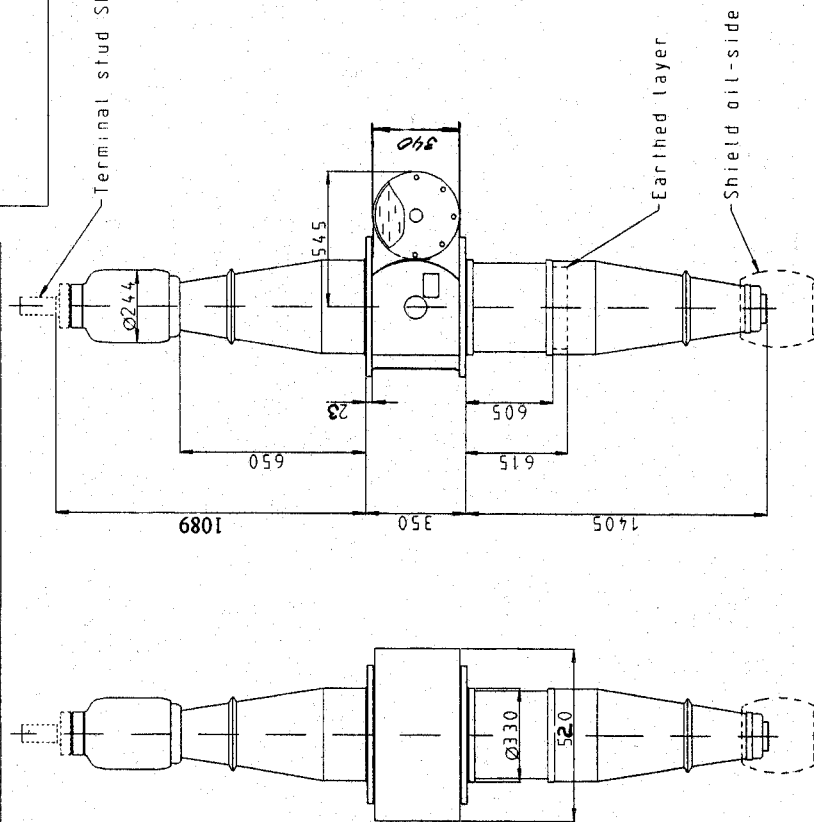


LF 170 050-AA (Al)

or
LF 170 050-AL (Cu/Ag)



LF 170 050-AH



Electrical data

Ratings
Rated voltage 420 kV
Max. phase to ground 245 kV
Rated current Vertical 2500 A
Rated current Horizontal 1600 A

Test voltages
Lighting impulse 1425 kV
Switching impulse 1175 kV

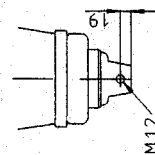
Routine test Power frequency 630 kV

ABB Components AB

Bushing GOEK 1425
No. Horiz. 1600 A
Un/uy 420/245 kV Vert. 2500 A
Test LI/SI/AC 1425/1175/630 kV
Year L 1405 mm M 320 kg
PF %C1/C2 pF

Catalogue number: LF 124 012-C

Tight bottom contact



Accepted by qual. Accepted for prod. by

Design checked by: Heyman
Drawn by: ANDERSSON
Issued by: Year: Week: COM/BK 94 31

DATA ORIGINAL
GOEK 1425 FE=600
Description (own language)

Rev. Inf. Revision
2 340 added
1 1089 was 1080

Rev.	Inf.	Revision	Appr.	Year	Week
2	340	added	AE	99	43
1	1089	was 1080	AE	97	43

ABB Components

2753 015-32

Lang	Sheet
Rev	Cont