

Bushing Data:

Rated Voltage	245	kV
Phase-to-earth Voltage	170	kV
Dry Lightning Impulse 1,2/50µs	950	kV
Wet Switching Impulse	650	kV
Wet Power frequency AC	395	kV
Routine test Imin dry 50Hz	395	kV
Rated Current	3150	A
Creepage Distance	5735	mm
Mass	375	kg

Ordering Data:

BUSHING
LF12 055 E / -AE COLOUR AIR INSULATOR
BROWN / LIGHT GREY

OUTER TERMINAL

	H2	D2
	(mm)	(mm)
LF170 073-A Al	125	60
LF170 073-B Cu	125	60
LF170 073-C Cu/Ag	125	60

OTHER TYPES ON REQUEST

END-SHIELD

LF170 046-U EPOXY INSULATED
LF170 046-IP INSULATED WITH 3 mm PRESSBOARD

DRAW ROD SYSTEM

LF170 059 LOWER DRAW ROD WITH NI=4 OR NI=6
LF170 057 UPPER DRAW ROD

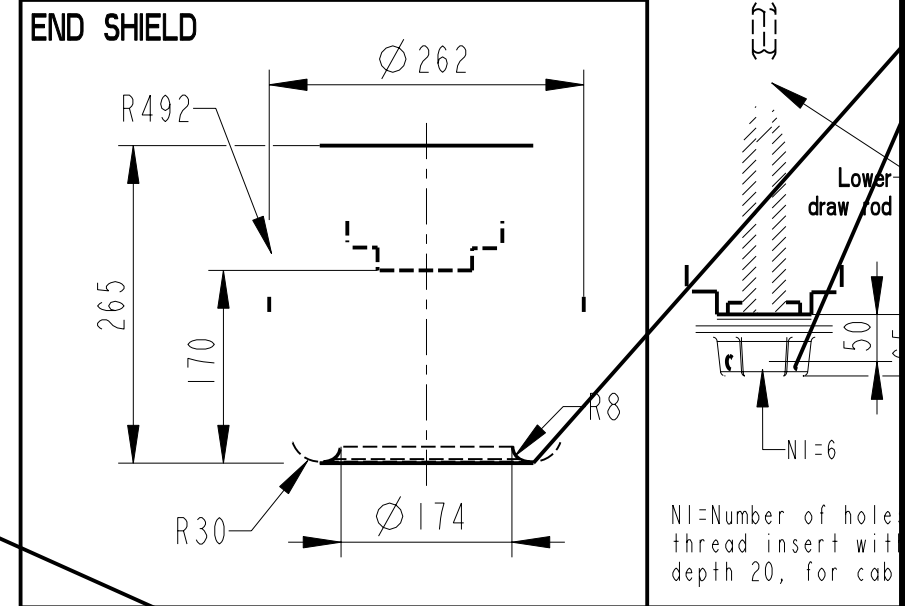
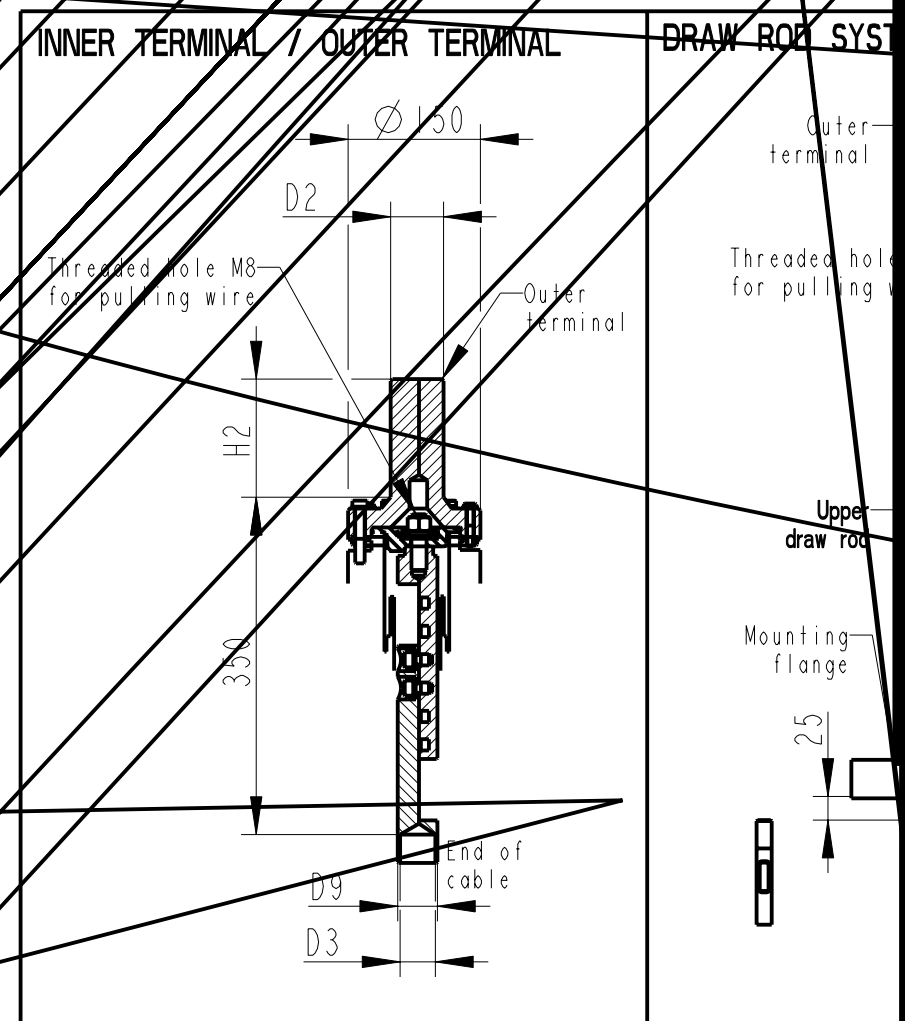
INNER TERMINAL

	D3	D9	Cond. area	Current (A)
	(mm)	(mm)	(mm ²)	IEC IEEE
LF170 056-E 0 *	45	-	-	-
LF170 056-D	40	45	600	1600 1360

* WITH PILOT HOLE D=5

ABB Components Ludhika, Sweden

U ₁	N ₁	kV r	A	50-60 Hz
U ₂	N ₂	kV si	kV AC	kV
U ₃	N ₃	kg L	mm	∠
Q ₁	PF	Tan δ		
Q ₂	PF	Tan δ		



NI=Number of hole thread insert with depth 20, for cable

Based on	Reg. No.	Title
Prepared Lövnord	Responsible department COM/BK 0022	GOF-
Approved Johansson	Take over department	Language 82
Design engineering review Gutman	Database	Page 1(1)
ABB Components		Document

We reserve all rights. No part of this document may be reproduced, stored in a retrieval system, or transmitted in any form or by any means, electronic, mechanical, photocopying, recording, or by any information storage and retrieval system, without the express authority of ABB.